



# YOUTH EDUCATION

---

## PROGRAMS & FIELD TRIP OPPORTUNITIES

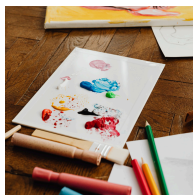




---

## 1 Mission & Vision

PAGE 2



---

## 2 About Education

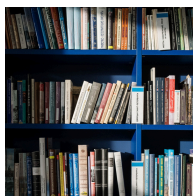
PAGE 3



---

## 3 Programs

PAGE 4-5



---

## 4 Guidelines

PAGE 7



---

## 5 FAQ

PAGE 8



---

## 6 Parking

PAGE 8



# CONTENTS

# MOUNTS BOTANICAL GARDEN



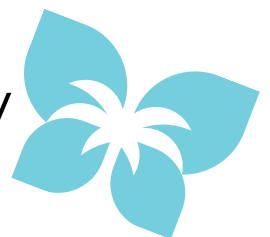
## Mission

To nurture meaningful connections with nature through immersive experiences and educational offerings.

---

## Vision

To be the go-to destination to discover, enjoy and be moved by nature.





## OUR CURRICULUM

As part of our mission to nurture meaningful connections with nature, Mounts Botanical Garden offers a broad spectrum of youth programming for students within grades K through 12, including a selection of teacher resources for our field trips on our website at [www.mounts.org](http://www.mounts.org).

Since Mounts is a 20-acre living plant museum with 25 unique garden areas, our educational programs each try to draw a picture of what it is to be more involved with and conscious of the natural world while utilizing the tropical paradise of Mounts as a resource.

From learning new ways to conserve water to identifying some of the world's most poisonous plants, there is no limitation to what can be explored throughout Mounts within the scope of education.

In order to reach as many students as possible, Mounts receives scholarship funding for specific audiences.

If your school is interested in scholarship opportunities to visit the Garden, please contact Aynari Garcia at [agarcia2@pbc.gov](mailto:agarcia2@pbc.gov).

About

# EDUCATION



## Our Mounts

# PROGRAMS

### SELF-GUIDED PROGRAMS

#### TREASURE TREK — NO TIME LIMIT

A self-guided tour of Mounts in which you, upon arrival, will receive a Treasure Trek map and clues to get you around Mounts in search of different species of plants. Background information and interesting facts are included to help with learning along the way.

- Appropriate for Grades K and up.
- Click [here](#) for the Treasure Trek teacher guide.
- Cost = \$5 per student for groups of 20 or more for Palm Beach County schools.

### TEACHER-LED PROGRAMS

#### AMBASSADOR OF THE WETLANDS — 3 HOURS

Students will begin their field trip experience in the classroom where they will learn about the Comprehensive Everglades Restoration Plan (CERP) and what is being done to clean and restore the Everglades to a healthy system. Students will take part in an activity where they use a dichotomous key to identify macroinvertebrates, then dip-net for living specimens at Mounts. They will use the data collected to determine the quality of water.

- Appropriate for Grades 9 and up.
- Click [here](#) for Teacher Guide.
- Click [here](#) for Definitions.
- Cost = \$20 per student for groups of 20 or more for Palm Beach County schools.

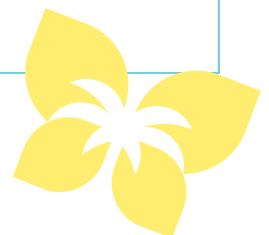
#### CLEAN CLEAR WATER — 60 MINUTES

Students will learn why water conservation and preserving the integrity of our environment is crucial to the well-being of everyone living in South Florida. We will test water looking for excess nutrients, learn about the impact of their water footprint, see how to conserve water in their own homes, and observe how our aquifers work.

- Appropriate for Grades 3 and up.
- Click [here](#) for Teacher Guide.
- Click [here](#) for Definitions.
- Cost = \$10 per student for groups of 20 or more for Palm Beach County schools.

- All programs include full day access to Mounts Botanical Garden for self exploration.
- For every program, 2 free chaperones will be admitted for every 20 students.

If you are not part of the Palm Beach school system, please contact [agarcia2@pbc.gov](mailto:agarcia2@pbc.gov) for pricing.



# PROGRAMS

## TEACHER-LED PROGRAMS

### FLOWER DISSECTION LAB — 60 MINUTES

Students will use hand-held microscopes to examine and label the different parts of a flower and discover what purpose the different structures serve in the reproductive process of plants.

- Appropriate for Grades 3 and up.
- Classroom activities and guided program.
- Cost = \$10 per student for groups of 20 or more for Palm Beach County schools.

### GUIDED GARDEN TOUR — 60 MINUTES

This is a docent guided tour. During the tour, your guides will point out a variety of plant species with interesting facts and characteristics.

- Appropriate for all ages.
- A guided experience.
- Cost = \$10 per student for groups of 20 or more for Palm Beach County schools.

### WICKED PLANTS — 60 MINUTES

The program begins with a PowerPoint presentation where students learn about amazing plant adaptations that may sound a bit “wicked” (carnivorous plants, those with spines and poison). We discover that these adaptations are helpful for the plant’s survival and can be very helpful to humans. We conclude the program with a docent-led tour to see these plants living in our Garden.

- Appropriate for Grades K and up.
- Click [here](#) for the Teacher Guide.
- Cost = \$10 per student for groups of 20 or more for Palm Beach County schools.

- All programs include full day access to Mounts Botanical Garden for self exploration.
- For every program, 2 free chaperones will be admitted for every 20 students.

If you are not part of the Palm Beach school system, please contact [agarcia2@pbc.gov](mailto:agarcia2@pbc.gov) for pricing.



## Our Mounts

# GUIDELINES



### NEED TO KNOW

Excluding Palm Beach County holidays, Mounts Botanical Garden is open Tuesday through Sunday, rain or shine from 9:00 am to 4:00 pm with last entry at 3:00 pm. Typically, schools arrive between 9:30 am and 10:00 am, but we will accommodate those times based on school and bus schedules as needed. Schools are more than welcome to stay on property until closing. Teachers, please refer to the [Teacher Guide](#) to help prepare your students for what they will see during their visit to Mounts.

---



### WHAT YOU SHOULD BRING

- Hat
  - Closed-toed Shoes
  - Sunscreen
  - Bug Repellent
  - Refillable Water Bottle
  - Healthy Lunch
  - Umbrellas/Ponchos (in case of rain)
- 



### GARDEN ETIQUETTE

While we are receiving schools into Mounts, we are also open to the public. We ask that students and teachers show continued respect to Garden areas and exhibits.

#### DO:

- Treat everything around you with respect.
- Feel free to explore all areas of the Garden, even those not on the concrete paths.
- Look up, down, and all around!

#### DON'T:

- Pick any leaves or flowers at Mounts, please. The plants are living exhibits and some have specialized adaptations such as poison or thorns.
  - Leave any trash around Mounts. Please pick up after yourselves.
- 



### MOUNTS PROVIDES:

- Bus Parking for charter or district buses.
- Sensory Backpacks will be made available on a first come, first serve basis. Please contact ahead of visit to coordinate.
- Shaded area for lunch storage.



### MOUNTS DOESN'T PROVIDE:

- Lunch: You are welcome to bring lunch as we will provide shaded storage areas, but Mounts does not distribute food or beverages on site.





---

### **Where can school buses park?**

School buses should enter what used to be the DMV parking lot off Military Trail. There will be signage indicating the additional parking area. Please see enclosed map with directions.

---

### **Are there lunch options?**

Mounts does not provide lunch, nor a designated lunch area for eating. Please feel free to bring lunches and we will store them during programming. You may sit and eat throughout the Garden. Please make sure to dispose of your trash in garbage cans located around the Garden and in the main buildings.

---

### **Is there a gift shop?**

We do not permit school groups to enter the gift shop. The gift shop is a small area and cannot accommodate the amount of students in school groups.

---

### **Who is eligible for the Group Rate?**

In order to receive the Group Rate, your booking must be reserved in advance and have a minimum of 20, full paying students within your group.

---

### **How do I pay?**

You can pay either ahead of time or on the day of arrival with a credit card or check.

---

### **When should attendance be finalized?**

We ask that numbers for attendance be finalized at least one week in advance of your arrival. The Group Rate will be applied to the finalized number.

---





## Parking address:

- Use GPS to 571 N Military Trail West Palm Beach, FL 33415 - located between Belvedere Road and Southern Boulevard.
- This address takes you to what was previously the DMV lot.
- Parking is inside the fenced-in area.



PARKING





Mounts Botanical Garden  
531 N. Military Trail | West Palm Beach, FL 33415  
561-233-1757 | [www.mounts.org](http://www.mounts.org)